

yeztugo[®]
(lenacapavir) injection
463.5 mg/1.5 mL

Exploring Access and Acquisition

**An overview focused on getting patients their
prescribed YEZTUGO**

Indication

YEZTUGO is indicated for pre-exposure prophylaxis (PrEP) to reduce the risk of sexually acquired HIV-1 in adults and adolescents (≥ 35 kg) who are at risk for HIV-1 acquisition. Individuals must have a negative HIV-1 test prior to initiating YEZTUGO.

Important Safety Information

BOXED WARNING: RISK OF DRUG RESISTANCE WITH USE OF YEZTUGO IN UNDIAGNOSED HIV-1 INFECTION

- Individuals must be tested for HIV-1 infection prior to initiating YEZTUGO, and with each subsequent injection of YEZTUGO, using a test approved or cleared by the FDA for the diagnosis of acute or primary HIV-1 infection. Drug-resistant HIV-1 variants have been identified with use of YEZTUGO by individuals with undiagnosed HIV-1 infection. Do not initiate YEZTUGO unless negative infection status is confirmed. Individuals who acquire HIV-1 while receiving YEZTUGO must transition to a complete HIV-1 treatment regimen.

Contraindications

- YEZTUGO is contraindicated in individuals with unknown or positive HIV-1 status.

Please see additional Important Safety Information throughout and full [Prescribing Information](#) for YEZTUGO, including **BOXED WARNING** at YeztugoPI.com.

Understanding Insurance Coverage

YEZTUGO is a healthcare provider (HCP)–administered medication, which can be administered at an HCP’s office, a hospital outpatient facility, a clinic, or an alternative site of care. Understanding each patient’s coverage is essential in determining the acquisition process and helping start that patient on YEZTUGO.

Benefits Coverage

The factors that can determine coverage for YEZTUGO include:

Type of payer

YEZTUGO is broadly covered by insurance plans, including:



Commercial



Medicare



Medicaid

Benefit category

An insurance plan may cover YEZTUGO under:



Medical benefit



Pharmacy benefit



Dual benefit (both pharmacy and medical)

Note: Under a split benefit, tablets and injectables are covered by separate benefits. See page 3 for details.

Important Safety Information (cont'd)

Warnings and precautions

• Comprehensive risk management:

- Use YEZTUGO to reduce the risk of HIV-1 acquisition as part of a comprehensive prevention strategy including adherence to the administration schedule and safer sex practices, including condoms, to reduce the risk of sexually transmitted infections (STIs).

KEY DETAILS FOR Prescribing YEZTUGO

yeztugo
(lenacapavir) injection
463.5 mg/1.5 mL



Injection Kit
NDC 61958-3402-01
HCPCS Level II code: J0738
(for initiation and continuation)



YEZTUGO
463.5 mg/1.5-mL injection

Inject 3 mL (two 1.5-mL injections) subcutaneously on Day 1 (for initiation; must be dispensed with YEZTUGO tablets), and then every 6 months from the date of last injection (for continuation).

Quantity: 3 mL (1.5 mL x 2)
Refills: 1



Tablets
NDC 61958-3401-01
HCPCS Level II code: J0752
(for initiation)



YEZTUGO
300-mg tablets

Take 2 tablets by mouth once on Day 1, and 2 tablets once on Day 2 (for initiation).

Quantity: 4 tablets
Refills: 0

- For initiation dosing, both injections and tablets are required
- For continuation dosing, only injections are required
- Remember to include the number of refills when submitting a prescription

Confirm HIV-negative status prior to injecting YEZTUGO and additionally as clinically appropriate.

For illustrative purposes only.
HCPCS=Healthcare Common Procedure Coding System;
NDC=National Drug Code.

See full Prescribing Information for recommended dosage, dosing schedule for missed dose, and dosage modification for individuals receiving YEZTUGO and initiating therapy with strong or moderate CYP3A inducers.

Aligning With a Specialty Pharmacy

- ✓ Confirm whether patient’s plan requires (or prefers) a Specialty Pharmacy (SP)
- ✓ Send both prescriptions (tablets and injectable) to a Gilead–contracted SP
- ✓ Contact your Field Reimbursement Manager (FRM) or Gilead Advancing Access® to request support identifying an SP

Please see additional Important Safety Information throughout and full [Prescribing Information for YEZTUGO](#), including **BOXED WARNING** at [YeztugoPI.com](#).

Getting Started

You can find help from the start by connecting with an FRM or Gilead Advancing Access®. Once you have prescribed YEZTUGO, there are **3 different pathways** you can take to get your patients started, based on your preference and their payer coverage.



Specialty Pharmacy (SP)


If dispensing via an SP is allowed by the payer, that SP can help with the steps to get YEZTUGO shipped to you under the medical or pharmacy benefit.

[Watch now: SP process overview video](#) →



In-House Specialty Pharmacy

If you have an in-house specialty pharmacy, they may be able to purchase and dispense YEZTUGO.



Buy and Bill

If you choose to and the payer covers YEZTUGO under medical benefit, you may be able to acquire YEZTUGO through the buy and bill process.

[Watch now: Buy & Bill process overview video](#) →



Alternative sites of care (ASOCs) can support YEZTUGO access and administration for your patients on your behalf.

[Click here to find an ASOC near you](#) →

Important Safety Information (cont'd)

Warnings and precautions (cont'd)

• Comprehensive risk management: (cont'd)

- HIV-1 acquisition risk includes behavioral, biological, or epidemiologic factors including, but not limited to, condomless sex, past or present STIs, self-identified HIV risk, having sexual partners of unknown HIV-1 viremic status, or sexual activity in a high-prevalence area or network. Counsel individuals on the use of other prevention methods to help reduce their risk.
- Use YEZTUGO only in individuals confirmed to be HIV-1 negative. Evaluate for current or recent signs or symptoms consistent with HIV-1 infection. Confirm HIV-1 negative status prior to initiating, prior to each subsequent injection, and as clinically appropriate.

NAVIGATING THE Approval Process

yeztugo[®]
(lenacapavir) injection
463.5 mg/1.5 mL

Your Gilead FRM and Gilead Advancing Access are here to help navigate the approval process. To help keep that process moving forward, consider the following tips:

- ✓ Start by conducting a benefits investigation or verification, and confirming any required documentation
 - Remember that a Gilead-contracted SP or Gilead Advancing Access can help with this step
- ✓ Keep in mind that payers often require clinical documentation or a prior authorization (PA)/medical exception
 - Proactively include test results when sending prescriptions to the SP
- ✓ Ensure that all required information or documentation is submitted to the payer
 - This is also a step where an SP or Gilead Advancing Access can help
- ✓ Respond to requests from the SP and/or payer in a timely manner, and remind patients to do so as well. These responses can directly impact the time to payer approval
- ✓ Keep in mind that, based on each patient's coverage, the approval process timing may vary (several days or weeks)

Understanding Split Benefits

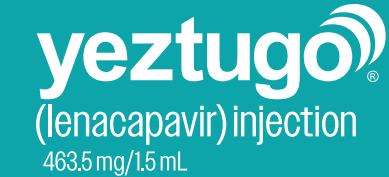
In some cases, the tablets and injectables are each covered under a different benefit type. This is known as a split benefit, which may impact parts of the prescribing and approval process, including:

- Separate submissions of required clinical documentation and/or authorizations
- Differences in approval processes and timing
- Variations in co-pay or cost-share requirements
- Use of different SPs depending on the benefit type

Please see additional Important Safety Information throughout and full [Prescribing Information](#) for YEZTUGO, including **BOXED WARNING** at [YeztugoPI.com](#).



ACQUIRING YEZTUGO THROUGH Specialty Pharmacy



SPs can help with the steps to get YEZTUGO shipped to you. Regardless of how the YEZTUGO components (oral tablets and injectable) are covered, the network SP can support coordination and shipment.

Reminders

- ✓ Your patient's insurance may specify from which SPs you can order YEZTUGO
 - Remember that your Gilead FRM and Gilead Advancing Access® can help confirm each payer's SP preferences
- ✓ After approval, coordinate shipping with SP so YEZTUGO is received before the injection appointment
- ✓ Share SP contact information with patients to help prevent missed calls, and encourage them to proactively reach out to the SP to provide required consent for shipment authorization
- ✓ If YEZTUGO is covered as a split benefit, tablets and injectables may come from different SPs (and be approved at different times)



**Questions?
Need support?
Contact your Gilead Field Reimbursement Manager or the Gilead Advancing Access Program at 1-800-226-2056.**

Your office can order YEZTUGO from this network of SPs.

AcariaHealth
1-833-236-9720
acariahealth.com

Accredo Specialty Pharmacy
1-866-900-8636
accredo.com

Avita Specialty Pharmacy
1-866-659-6468
avitapharmacy.com

CenterWell
1-844-330-7893
centerwellpharmacy.com/
specialty.html

Curant Health
1-866-767-0004
curanthealth.com

CVS Specialty Pharmacy
1-800-237-2767
cvsspecialty.com

Genoa Healthcare/ Optum Specialty Pharmacy
1-888-349-0673
genoahc.com,
part of OptumRx -
specialty.optumrx.com

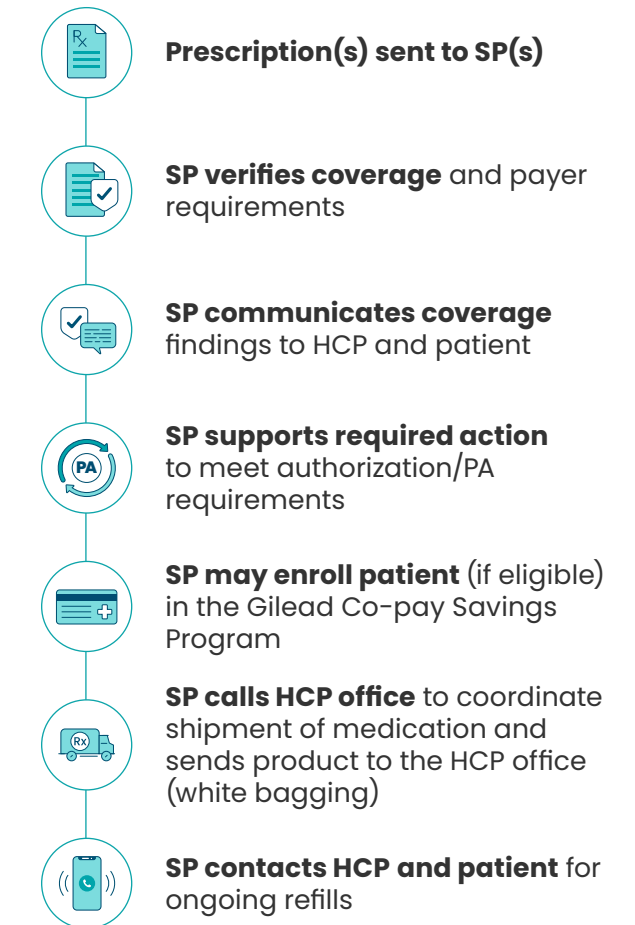
Walgreens Specialty Pharmacy
1-855-244-2555
walgreensspecialtyrx.com

Walmart
1-877-453-4566
walmart.com/
specialtypharmacy

As of January 1, 2026.

Please see additional Important Safety Information throughout and full [Prescribing Information](#) for YEZTUGO, including **BOXED WARNING** at [YeztugoPI.com](#).

SP Process



Disclaimer: Not every product acquisition will follow exactly the steps described in the illustrated process.

Important Safety Information (cont'd)

Warnings and precautions (cont'd)

- **Potential risk of resistance:**
 - There is a potential risk of developing resistance to YEZTUGO if an individual acquires HIV-1 before or when receiving YEZTUGO, or following discontinuation. HIV-1 resistance substitutions may emerge in individuals with undiagnosed HIV-1 infection taking only YEZTUGO, because YEZTUGO alone is not a complete regimen for HIV-1 treatment.



ACQUIRING YEZTUGO THROUGH

In-House Specialty Pharmacy



Your office may have an in-house specialty pharmacy that can purchase and dispense the patient's prescribed medication.

Reminders

- ✓ There may be instances where an in-house specialty pharmacy may not be approved to dispense YEZTUGO by a payer
- ✓ YEZTUGO is distributed through a network of specialty distributors and specialty pharmacies
- ✓ If YEZTUGO is covered as a split benefit, tablets and injectables may come from different SPs (and be approved at different times)

Important Safety Information (cont'd)

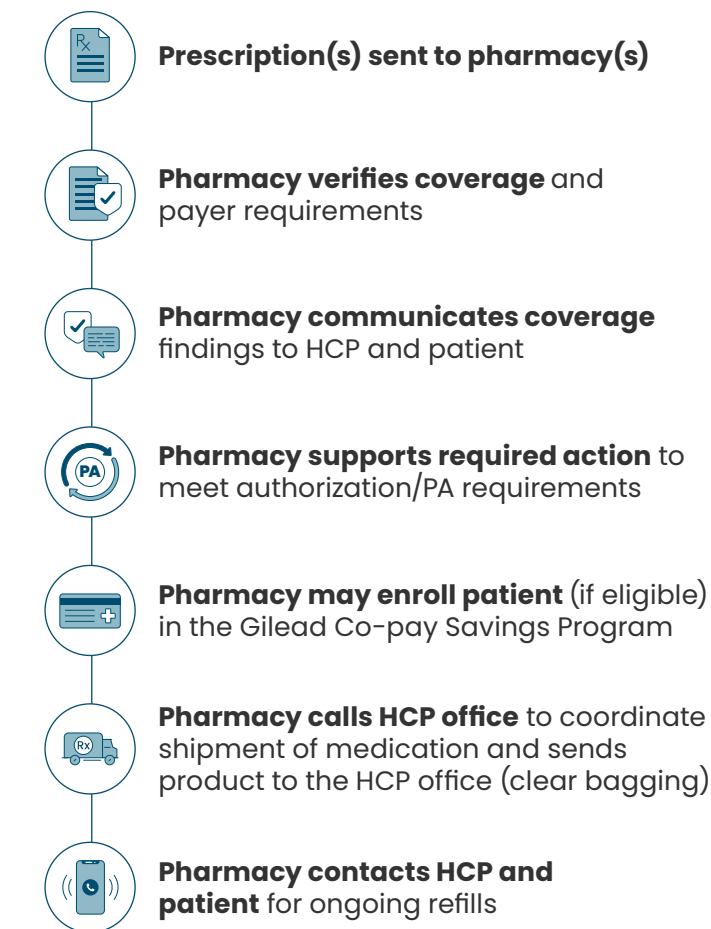
Warnings and precautions (cont'd)

- Potential risk of resistance: (cont'd)
 - To minimize this risk, it is essential to test before each injection and additionally as clinically appropriate. Individuals confirmed to have HIV-1 must immediately begin a complete HIV-1 treatment regimen.
 - Alternative forms of PrEP should be considered after discontinuation of YEZTUGO for those who are at continuing risk of HIV-1 acquisition and should be initiated within 28 weeks of the last YEZTUGO injection.



**Questions? Need support?
Contact your Gilead Field
Reimbursement Manager or the
Gilead Advancing Access® Program
at 1-800-226-2056.**

In-House Specialty Pharmacy Process



Disclaimer: Not every product acquisition will follow exactly the steps described in the illustrated process.

Please see additional Important Safety Information throughout and full [Prescribing Information](#) for YEZTUGO, including **BOXED WARNING** at [YeztugoPI.com](#).



ACQUIRING YEZTUGO THROUGH

Buy and Bill

yeztugo[®]
(lenacapavir) injection
463.5 mg/1.5 mL

GETTING
STARTED

SPECIALTY
PHARMACY

IN-HOUSE SP

BUY & BILL

RESOURCES

If you choose and your patient's insurance covers YEZTUGO under the medical benefit, you may be able to acquire it through the buy and bill process. If the oral tablets are not covered under the medical benefit, you may receive them separately through a network SP or your in-house SP.

Reminders

- ✓ Coordinate with specialty distributors to deliver YEZTUGO in time for injection appointments
- ✓ If YEZTUGO is covered as a split benefit, tablets and injectables may come from different SPs (and be approved at different times)



**Questions? Need support?
Contact your Gilead Field
Reimbursement Manager or
the Gilead Advancing Access[®]
Program at 1-800-226-2056.**

Specialty Distributors

YEZTUGO can be ordered from one of the network specialty distributors below:

ASD Healthcare, a Cencora Company

Besse Medical, a Cencora Company

Cardinal Specialty

CuraScript Specialty Distribution

McKesson Plasma and Biologics

McKesson Specialty

Morris & Dickson Specialty

The list of authorized distributors is updated periodically and subject to change. Please visit gilead.com/medicines/authorized-distributors for updates.

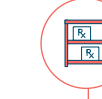
Buy and Bill Process



HCP office verifies coverage for patient's insurance plan



HCP office purchases product through network specialty distributor



HCP office will store, manage, and track their inventory of YEZTUGO



HCP office may submit medical claims for product and its administration to patient's insurance for processing



Patient or HCP office may pay any co-pays or coinsurance owed by the patient



HCP office may submit claim for Gilead Co-pay Savings Program

Disclaimer: Not every product acquisition will follow exactly the steps described in the illustrated process.

Important Safety Information (cont'd)

Warnings and precautions (cont'd)

- **Long-acting properties and potential associated risks:**
 - Residual concentrations of YEZTUGO may remain in systemic circulation for up to 12 months or longer after the last injection.
 - Select individuals who agree to the required injection dosing schedule because nonadherence or missed doses could lead to HIV-1 acquisition and development of resistance.
- **Serious injection site reactions:** Improper administration (intra-dermal injection) has been associated with serious injection site reactions, including necrosis and ulcer. Only administer YEZTUGO subcutaneously.

Please see additional Important Safety Information throughout and full [Prescribing Information](#) for YEZTUGO, including **BOXED WARNING** at [YeztugoPI.com](http://yeztugopi.com).

Co-pay Savings Program

Eligible, commercially insured individuals could pay as little as \$0 for YEZTUGO^a



The **Gilead Co-pay Savings Program** assists eligible, commercially insured patients with their co-pays.^a

- **Up to \$8000** in cost-sharing assistance per calendar year, including **up to \$100** per visit for injection administration per treatment with no monthly limit^b
- If eligible, Gilead Co-pay Savings Program may be able to help your patients lower their co-pay to **as low as \$0**



Reimbursement Considerations

- **If product is being acquired through a specialty pharmacy or in-house specialty pharmacy**, the pharmacy will process the co-pay card information and apply it to the patient's out-of-pocket costs
- **If product is being acquired through buy and bill**, your office will submit an Explanation of Benefits through PrEP.AdvancingAccess.com/hcp

Enroll Eligible Patients Today^a

Start the process at

[gileadadvancingaccess.com/
copay-coupon-card](http://gileadadvancingaccess.com/copay-coupon-card)

or call 1-855-593-2916.

^aCo-pay coupon support is available for commercially insured eligible patients only. Additional restrictions may apply. Subject to change; for full terms and conditions, visit www.gileadadvancingaccess.com/copay-coupon-card. This is not health insurance.

Additional information about how Gilead may use the patient's information can be found in Gilead's Privacy Statement and Consumer Health Data Privacy Policy available at www.gilead.com. If you have any questions about the Gilead Co-pay Savings Program, please call our help desk at 1-855-593-2916, Monday through Friday, 8 AM to 8 PM ET.

^bInjection administration assistance not available in MA, MD, or RI.

Important Safety Information (cont'd)

Adverse reactions

- **Most common adverse reactions** (≥5%) in YEZTUGO clinical trials were injection site reactions, headache, and nausea.

Drug interactions

- Strong or moderate CYP3A inducers may significantly decrease YEZTUGO concentrations. Dosage modifications are recommended when initiating these inducers.
- It is not recommended to use YEZTUGO with combined P-gp, UGT1A1, and strong CYP3A inhibitors.
- Coadministration of YEZTUGO with sensitive substrates of CYP3A or P-gp may increase their concentrations and result in the increased risk of their adverse events. YEZTUGO may increase the exposure of drugs primarily metabolized by CYP3A initiated within 9 months after the last injection of YEZTUGO.

Field Reimbursement Managers



Field Reimbursement Manager (FRM) Support

FRMs are here—with their expertise—to provide information about the acquisition process so you can get your patients the medication they need.



Your Field Reimbursement Managers Can Provide Information About:

- A Gilead Advancing Access[®] Program overview
- General questions involving access, reimbursement, and acquisition
- Navigating the acquisition pathway, so your patients can start their medication without delays
- Providing your office with answers about patient-specific questions and follow-ups

Please see additional **Important Safety Information** throughout and full **Prescribing Information** for YEZTUGO, including **BOXED WARNING** at YeztugoPI.com.

Patient Support Program

Helping your patients access their prescribed Gilead medication

Gilead Advancing Access offers support for your patients through a combination of self-serve options and live representatives.

Program Offerings



Dedicated Program Specialists

When you contact Gilead Advancing Access, a program specialist can provide your practice with information on the different acquisition pathways and coverage options.



Benefits Investigations

Gilead Advancing Access can conduct a benefits investigation. This includes researching and verifying each patient's specific insurance benefits and coverage for YEZTUGO.



Prior Authorization/Appeals Information

Gilead Advancing Access can assist with identifying prior authorization needs and gathering information about appeals requirements and related processes.

Important Safety Information (cont'd)

Dosage and administration

- **HIV screening:** Test for HIV-1 infection prior to initiating, prior to each subsequent injection, and as clinically appropriate using an approved or cleared test for the diagnosis of acute or primary HIV-1 infection.
- **Dosage:** Initiation dosing (injections and tablets) followed by once-every-6-months continuation injection dosing. Tablets may be taken with or without food.
 - **Initiation:** Day 1: 927 mg by subcutaneous injection (2 x 1.5-mL injections) and 600 mg orally (2 x 300-mg tablets). Day 2: 600 mg orally.
 - **Continuation:** 927 mg by subcutaneous injection every 6 months (26 weeks) from date of last injection ±2 weeks.



Gilead Co-pay Savings Program^a

Gilead can provide assistance with medication and administration fee out-of-pocket costs for eligible, commercially insured individuals.



Medication Assistance Program (MAP)

Eligible, uninsured individuals may receive their Gilead medication free through the MAP. Visit GileadAdvancingAccess.com to determine your patients eligibility.



Additional Coverage Support

Gilead Advancing Access can research additional coverage options to identify whether your patient may be eligible for additional financial assistance by a state pre-exposure prophylaxis drug assistance program, independent co-pay foundation, the Medicare Low-Income Subsidy, a state Medicaid program, or a federal or state health insurance exchange.

^aCo-pay coupon support is available for commercially insured eligible patients only. Additional restrictions may apply. Subject to change; for full terms and conditions, visit www.gileadadvancingaccess.com/copy-coupon-card. This is not health insurance.

Please see additional Important Safety Information throughout and full [Prescribing Information](#) for YEZTUGO, including **BOXED WARNING** at YeztugoPI.com.



Explore the program at

PrEP.AdvancingAccess.com/hcp



Speak live with a dedicated specialist Monday through Friday, 9 AM – 8 PM EST at 1-800-226-2056.

Please let us know if English is not your preferred language.

YEZTUGO is broadly covered and support options are available

yeztugo[®]
(lenacapavir) injection
463.5 mg/1.5 mL

YEZTUGO is covered by most commercial, Medicare, and Medicaid insurance plans

Don't let cost be a barrier. The Gilead Advancing Access[®] Co-pay Savings Program may help eligible, commercially insured patients lower their out-of-pocket costs.

Help your eligible, commercially insured patients pay as little as \$0 for YEZTUGO.^a

Enroll them now at
PrEP.AdvancingAccess.com/hcp →

^aFor commercially insured eligible patients only. See terms and conditions at: www.gileadadvancingaccess.com/copay-coupon-card.

Indication

YEZTUGO is indicated for pre-exposure prophylaxis (PrEP) to reduce the risk of sexually acquired HIV-1 in adults and adolescents (≥35 kg) who are at risk for HIV-1 acquisition. Individuals must have a negative HIV-1 test prior to initiating YEZTUGO.

Important Safety Information (cont'd)

Dosage and administration (cont'd)

- **Anticipated delayed injections:** If scheduled 6-month injection is anticipated to be delayed by more than 2 weeks, YEZTUGO tablets may be taken on an interim basis (for up to 6 months) until injections resume. Dosage is 300 mg orally (1 x 300-mg tablet) once every 7 days. Resume continuation injections within 7 days of the last oral dose.
- **Missed injections:** If more than 28 weeks have elapsed since the last injection and YEZTUGO tablets have not been taken, restart with initiation dosing if clinically appropriate.
- Dosage modifications of YEZTUGO are recommended when initiating with strong or moderate CYP3A inducers. Consult the full Prescribing Information for recommendations.

Please see additional Important Safety Information throughout and full [Prescribing Information](#) for YEZTUGO, including **BOXED WARNING** at [YeztugoPI.com](https://yeztugopi.com).



YEZTUGO, the YEZTUGO Logo, ADVANCING ACCESS, GILEAD, and the GILEAD Logo are trademarks of Gilead Sciences, Inc., or its related companies. All other marks referenced herein are the property of their respective owners.
©2026 Gilead Sciences, Inc. All rights reserved. US-YTGP-0382 01/26